

GLULAM

STRUCTURAL TIMBER BEAMS



AVAILABLE IN SPRUCE, LARCH AND OAK



C O W L E Y
T I M B E R + P A R T N E R S

GLULAM PRODUCT RANGE

COWLEY TIMBER AND PARTNERS HAVE BEEN CONSTRUCTING BUILDINGS FROM GLULAM TIMBER FOR OVER 40 YEARS. OUR EXPERIENCE OF TIMBER SELECTION HAS ENABLED US TO SOURCE THE BEST AND HIGHEST QUALITY STRUCTURAL BEAMS, BOTH STRAIGHT AND CURVED, FOR BUILDING OUR BESPOKE PROJECTS.

WE ARE NOW ABLE TO OFFER TO OUR CUSTOMERS THE SAME MATERIALS THAT COWLEY SPECIFY IN THEIR OWN CONTRACTS. WE HOLD IN STOCK A LARGE SELECTION OF HIGH QUALITY STRUCTURAL BEAMS IN A VARIETY OF SPECIES, SIZES AND FINISHES WHICH ARE AVAILABLE TO PURCHASE DIRECT.

PEFC GL28H EUROPEAN SPRUCE GLULAM BEAMS WITH CLEAN PLANED FINISH

MM	100	140	200	240	280	320	360	400	440	480	520
100	✓		✓	✓	✓	✓	✓	✓			
120				✓	✓	✓	✓	✓	✓		
140		✓		✓	✓	✓	✓	✓	✓		
160							✓	✓	✓	✓	✓

PEFC GL24H LARCH GLULAM BEAMS WITH CLEAN PLANED FINISH

MM	215	245	275	310	340	370	400	435
115	✓	✓	✓	✓	✓	✓	✓	
140		✓	✓	✓	✓	✓	✓	✓

PEFC EUROPEAN OAK GLULAM BEAMS WITHOUT SAPWOOD & WITH CLEAN PLANED FINISH

MM	140	160	200	240	280	320	360	400	440
80		✓	✓	✓	✓	✓			
100			✓	✓	✓	✓	✓		
120				✓	✓	✓	✓	✓	
140	✓				✓	✓	✓	✓	✓

WE CAN ALSO OFFER A BESPOKE MACHINING AND FABRICATION SERVICE.





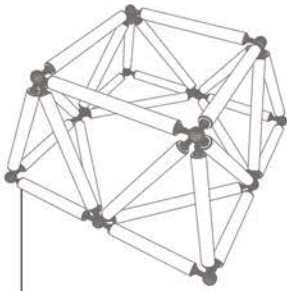
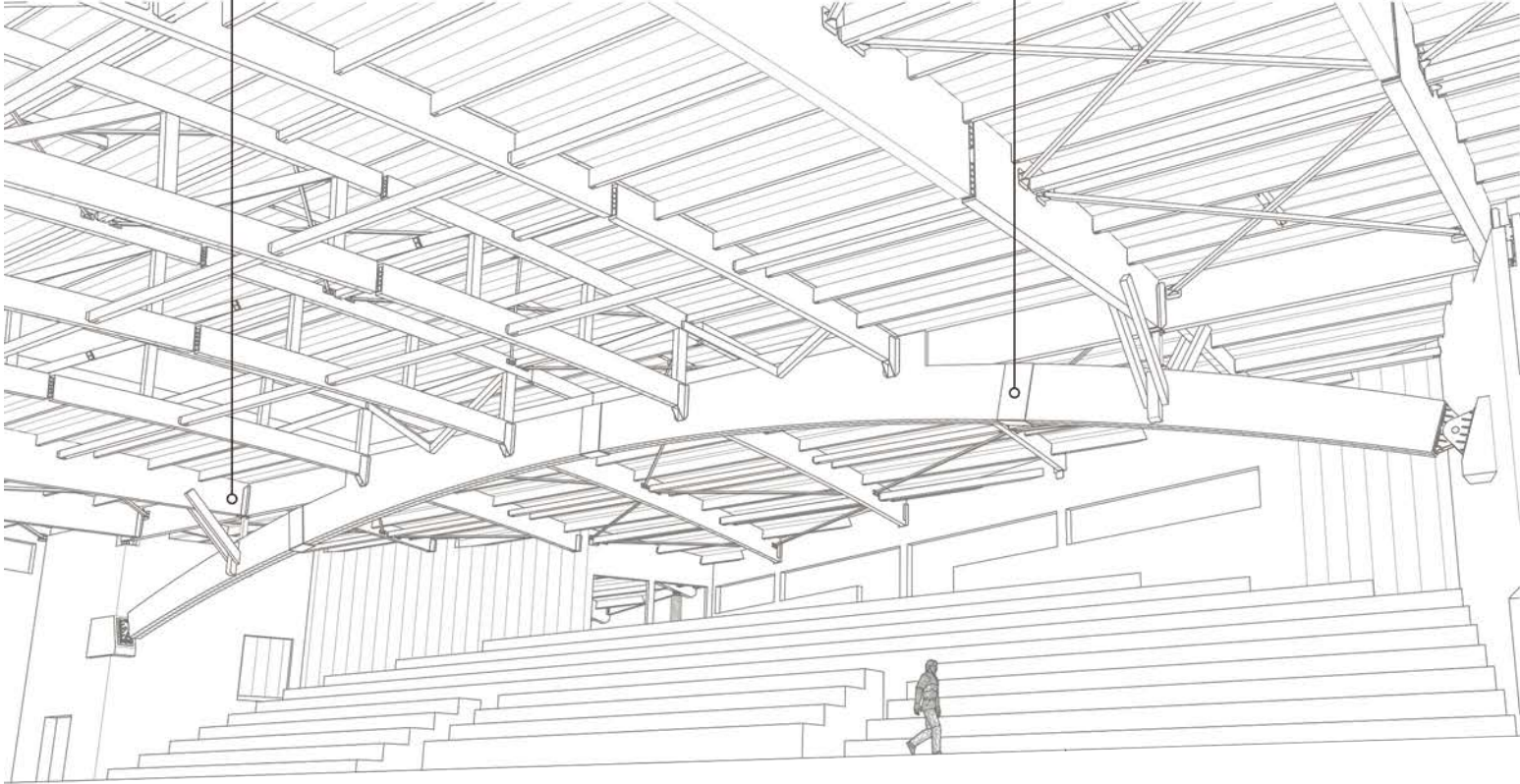
GLULAM

Integrated engineering : Structural design, CAD drawings, CNC programming
 Species : soft and hardwood
 Bespoke shapes, fully machined, ready to install
 Special shapes : CNC lathe and double curves

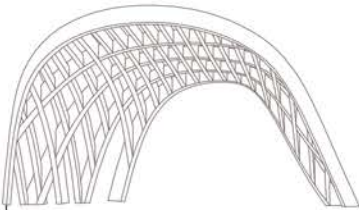


RESIX

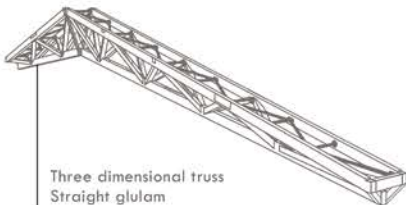
High performance connection
 Exceptional mechanical resistance
 Uniformly distributed load
 Tight joint assembly
 Adapted for transport (splice connection)



Three dimensional structure
Cylindrical glulam



Portal frame
Double curved glulam



Three dimensional truss
Straight glulam





COWLEY TIMBER + PARTNERS LTD

UNIT 13 ABBOTTS WAY NEWARK BUSINESS PARK NEWARK
NOTTINGHAMSHIRE NG24 2EL

T: 01522 720022 **E:** MAIL@COWLEYTIMBER.CO.UK

W: WWW.COWLEYTIMBER.CO.UK

REGISTERED OFFICE: 41 PEAR TREE STREET LONDON EC1V 3AG



ALL WOODS USED IN THE
MANUFACTURE OF OUR
CLADDING ARE FROM
SUSTAINABLE FORESTS